

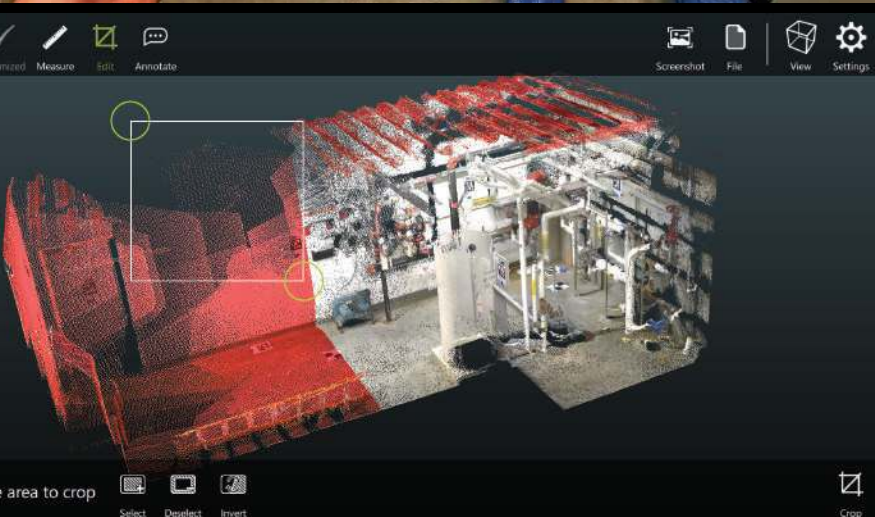
DOT PRODUCT

DPI-8S / DPI-8S SR

Complete Handheld 3D Scanning Kits
Powered by **Dot3D Pro** Software

Handheld 3D Data Capture on a Tablet

DotProduct develops high performance easy-to-use solutions for capturing 3D data. Our technology is designed for mobile professionals who need high quality spatial data, instantly. On the DPI-8S and DPI-8S SR, our included **Dot3D Pro** software turns Android tablets into fully mobile 3D-capture and -processing solutions that delivers results before you leave the job site.



NEW with the DPI-8S and DPI-8S SR:

- » 3GB RAM and 32 GB of storage for larger scene capture.
- » Access to the tablet's 8MP camera for capture of HD photographs while scanning - embedded into the DP scan file in the 3D location and orientation of capture.
- » Improved battery life, processing, touchscreen, and more.
- » Sleek, lighter weight design: total weight of only 2 lbs 7 oz.

Truly Mobile, Self-Contained Handheld 3D Scanning

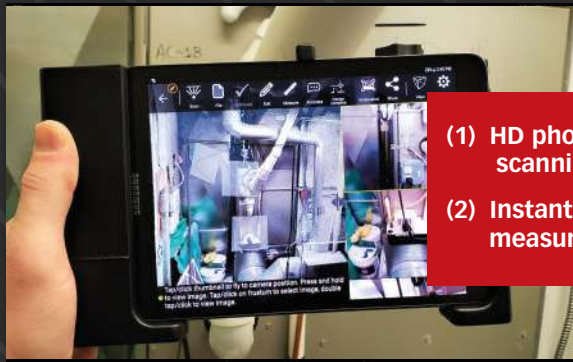
Forget lugging around a laptop and cumbersome cables

- » Capture and process 3D spatial data directly on the tablet!
- » Safely scan difficult areas with one or two hands.
- » Crop, measure, annotate and more in **Dot3D Pro**.
- » Compare and register scan data to CAD data on the tablet in the field with **Dot3D Pro 3.1** and up (included).

Real-Time Results with Dot3D Pro on Android

- » No surprises: leave the jobsite knowing you've collected the right data you need for your project.
- » **Dot3D Pro** technology provides users with real-time data quality feedback as the data is being acquired.
- » Instantly review point cloud datasets right on the tablet.

Completely self-contained, handheld 3D scanning solutions



- (1) HD photo capture while scanning, saved in 3D location
- (2) Instant data review, measurement and more!



Georeference, Measure, Crop, and Annotate in the Field

- » Set the coordinate system on the tablet in seconds.
- » Measure distances (point-to-point, vertical, horizontal), surface areas, diameters, and more, directly from the data on the job site.
- » Crop, annotate, filter, optimize, implement targets, register, and compare with CAD in the new **Dot3D Pro** software on Android.

Utilize Advanced Workflows to Append and Add Targets

- » Use the Append function to add new data to previously captured 3D spatial data. New data can be captured and appended on-the-fly without the need for additional targets and control.
- » Implement survey targets to reference scale distances and known coordinates. Improve accuracy by using AprilTags for automatic loop closure.

Direct Export to Industry Standard Point Cloud Formats

- » Use DPI-8S/SR captured data with the desktop 3D software you work with today. No need to change your current workflow.
- » Export in PTS, PTX, PLY, PTG, E57, LAS, LAZ, POD, or DP format for efficient storage and rapid data export. Native DP files integrate directly with Autodesk ReCap, Leica Cyclone, Trimble Realworks, Z+F LaserControl, ClearEdge3D, AVEVA LFM, Bloom Cloud Engine, CloudCompare, InfiPoints, PointCab, Pointfuse, 3D Reconstructor, Rhino, Sequoia, Undet, Visual Statement, WorldViz, and more.

The DotProduct DPI-8S / DPI-8S SR Handheld 3D Scanning Kit contains:

- 1 8" Android Tablet computer with at least 32GB of storage (DotProduct reserves the right to provide greater than 32GB depending on availability)
- 1 License of DotProduct Dot3D Pro software, preloaded and licensed to that tablet computer and camera. License is perpetual or 3-year subscription.*
- 1 PrimeSense Carmine 1.082 (1.09 for SR) red, green, blue and depth sensor
- 1 DPI dual-grip housing for Android tablet and sensor
- 3 USB to micro USB connectors for connecting camera to tablet
- 3 Carrying case
- 1 Tablet charger
- 1 Printed quick start guide and digital user manual

Perpetual license includes 12-months of software support, maintenance, and upgrades. 3-year license must be renewed after 3 years to retain functionality.

Test Facility Results

(measured distance in final post-processed model)

Range	Typical Accuracy	Minimum Accuracy
< 1 m (3.3 ft)	99.8%	99.6%
1 m to 2 m (6.6 ft.)	99.5%	99.2%
2 m to 3.3 m (11 ft.)*	99.0%	98.6%
> 3.3 m (11 ft.)*	Not Specified	Not Specified

*DPI-8S only. DPI-8S SR working range is 0.3-2 m

DPI-8S / DPI-8S SR Compatible Accessories

Extension Kit, Light Kit, AccuScale-DP Scale Bar Kit, InfiPoints-DP

DPI-8S/ DPI-8S SR Handheld 3D Scanning Kit Performance

The data quality of the DPI-8S/SR depends on range, temperature, ambient lighting conditions, reflectivity of the area of interest, operator skill and other factors. System accuracy is improved by using survey targets. System performance is degraded by long collection times, accumulation of frame-to-frame drift and lack of scene fitness induced by geometry and texture limitations.

The working range of the DPI-8S is from 0.6 m to 3.7 m (2 ft – 12 ft). The working range of the DPI-8S SR is from 0.3 m to 2 m (1 ft - 6 ft).

Illustrations, descriptions and technical specifications are not binding and may change.

DPI-8S / DPI-8S SR Product Specifications - General

Imager Type	Compact, near infrared structured light and RGB 3D depth imaging system
User Interface	Android operating system
Data Storage	Onboard 32 GB flash drive
Data Transfer	USB 2.0, microUSB connector
Battery Life	2-3 hours of continuous scanning, extendable with 2nd tablet

DPI-8X Product Specifications - Physical

Mass	1.11 kg (2.7 lbs.)
Dimensions	24 cm x 14.5 cm x 7.3 cm (9.5 in x 5.7 in. x 2.9 in.)
Temperature	Tested operating range: 15 °C to 32 °C (60 °F to 85 °F)
Lighting	Not operational in direct sunlight
Humidity	Non-condensing



Please feel free to contact us for more details about our calibration and test procedures.

DotProduct LLC | 11 Elkins St. | Suite 310 | Boston, MA 02127 USA | +1 617 415-7222 | www.dotproduct3d.com